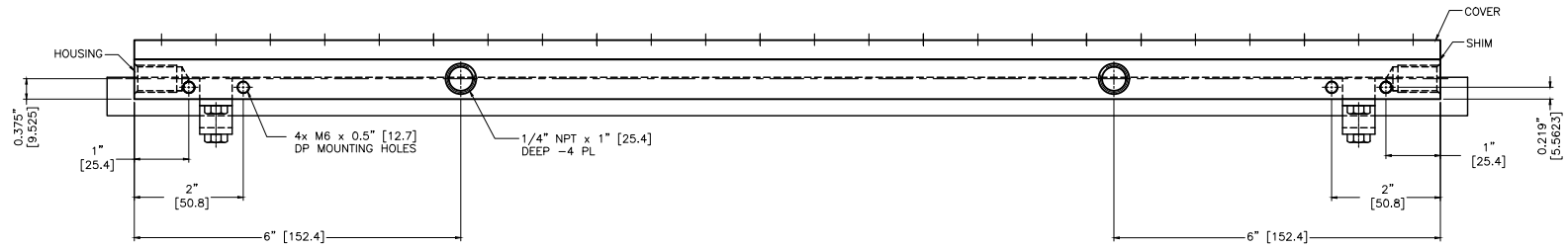
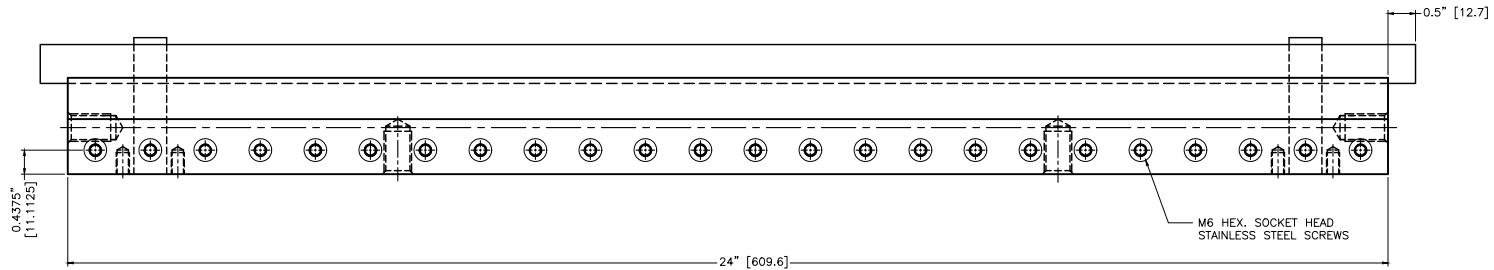
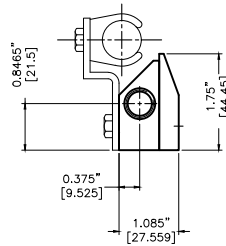


8 7 6 5 4 3 2 1

NOTES:

- 1 ALL DIMENSIONS SHOWN ARE FINISH OPERATIONAL DIMENSIONS WHICH INCLUDE RESIDUAL COATINGS UNLESS OTHERWISE SPECIFIED.
- 2 PART TO BE PACKED PROPERLY TO AVOID ANY DAMAGE WHILE SHIPPING & HANDLING.
- 3 ALL HORIZONTAL DIMENSIONS ARE SYMMETRICAL ABOUT CENTER LINE UNLESS OTHERWISE SPECIFIED.



THIRD ANGLE PROJECTION	REQUIREMENTS—UNLESS OTHERWISE SPECIFIED				CONTRACT NUMBER	NEX FLOW AIR PRODUCTS CORP. 10520 YONGE STREET, UNIT 358-220, RICHMOND HILL, ON L4C 3C7 TEL.: (416) 410-1313 & FAX: (416) 410-1806 www.nex-flow.com	
	GENERAL				CLIENT	TITLE	
MATERIAL	1. DIMS ARE IN INCHES (MM)				CONTRACTOR	OUTLINE DRAWING OF	
	2. DIMENSIONING AND TOLERANCING IN ACCORDANCE WITH ANSI Y14.5 (1982)				DATE	24" X-STREAM AIR BLADE AIR KNIFE	
FINISH	3. MACHINE FINISH 125 MICRO INCH RMS				DESIGN	WITH IONIZER	
	4. INTERNAL RADI .015				CHECKED	DWG NO	
5. BREAK SHARP CORNERS .005 TO .015				PROJECT	15024X/16024X		
LIMITS				STRESS	MANUFACTURING	SIZE	CAGE CODE
1. LINEAR DIMS				—	—	—	—
.XXX = .005				—	—	—	—
.XX = .010				—	—	—	—
.X = .030				—	—	—	—
2. ANGLES = ± 1/2"				—	—	—	—
3. RUNOUT .010 THR				—	—	—	—
4. HOLES IN ACCORDANCE WITH AND 10387				—	—	—	—
NEXT ASSEMBLY USED ON QTY PER PART NO				MECHANISM	ELECTRICAL	SCALE	CAD NO
PART NO				—	—	1:1	XAKI-24
							SHEET 1 OF 1

8 7 6 5 4 3 2 1